

Erasmus+ Online Linguistic Support

Make the most
of your **Erasmus+**
experience!



Erasmus+: changing lives, opening minds



Erasmus+ is aimed at boosting **skills** and **employability**, as well as modernising Education, Training and Youth work.

Erasmus+ contributes to promoting **cooperation**, **diversity** and **multilingualism**.



Erasmus+: learn anywhere



- With **4 MILLION participants** by 2020, Erasmus+ is a **unique opportunity** to study, train, gain work experience or volunteer abroad.

Erasmus+ OLS: language learning for you



- As languages are the heart of **mutual understanding** and **comprehension**, it is essential to promote language learning for Erasmus+ mobility participants.

To support you, we have implemented the **Online Linguistic Support (OLS)**.



Erasmus+ OLS language assessment: a unique opportunity



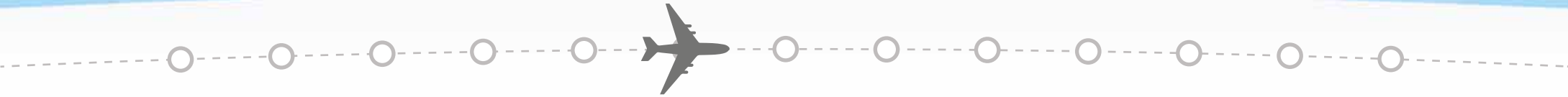
As a mobility participant, you have
the opportunity to assess and improve your skills
in the foreign language you will use
to study, work or volunteer abroad.*

*The results of the OLS language assessment will not prevent you from taking part in the mobility.

Erasmus+ OLS: languages



The Erasmus+ OLS language assessment



The OLS language assessment is compulsory for Erasmus+ mobility participants with German, English, Spanish, French, Italian or Dutch as their main language of instruction, work or volunteering.¹

If you are a higher education student, taking the OLS language assessment is a prerequisite to your mobility.²



Before their Erasmus+ mobility period

At the end of their Erasmus+ mobility period

¹ with the exception of native speakers

² except in duly justified cases

Welcome to the Erasmus+ OLS!



Once selected for Erasmus+, you will receive an email with your personal credentials.



Log on to
www.erasmusplusols.eu



Take the OLS
assessment!

Check your language level!



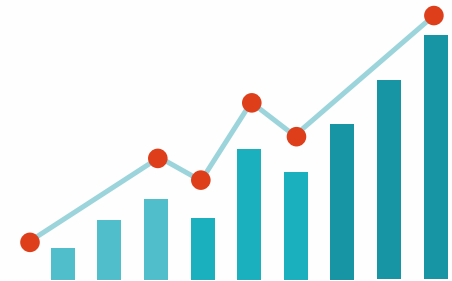
The Erasmus+ OLS language assessment



consists of **70 questions**

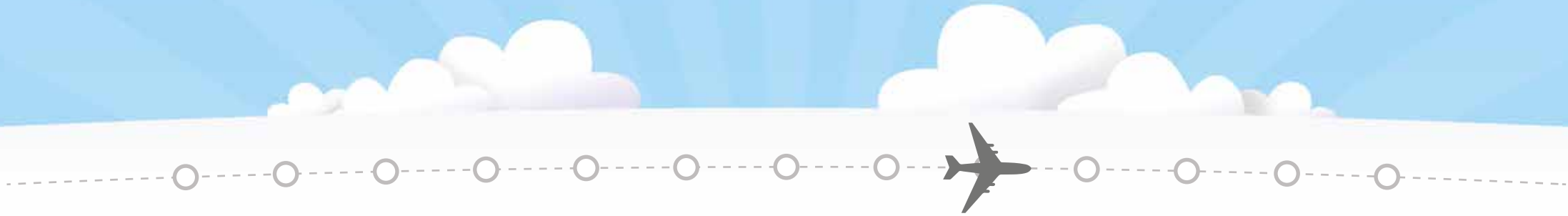


takes approximately
40 to 50 minutes

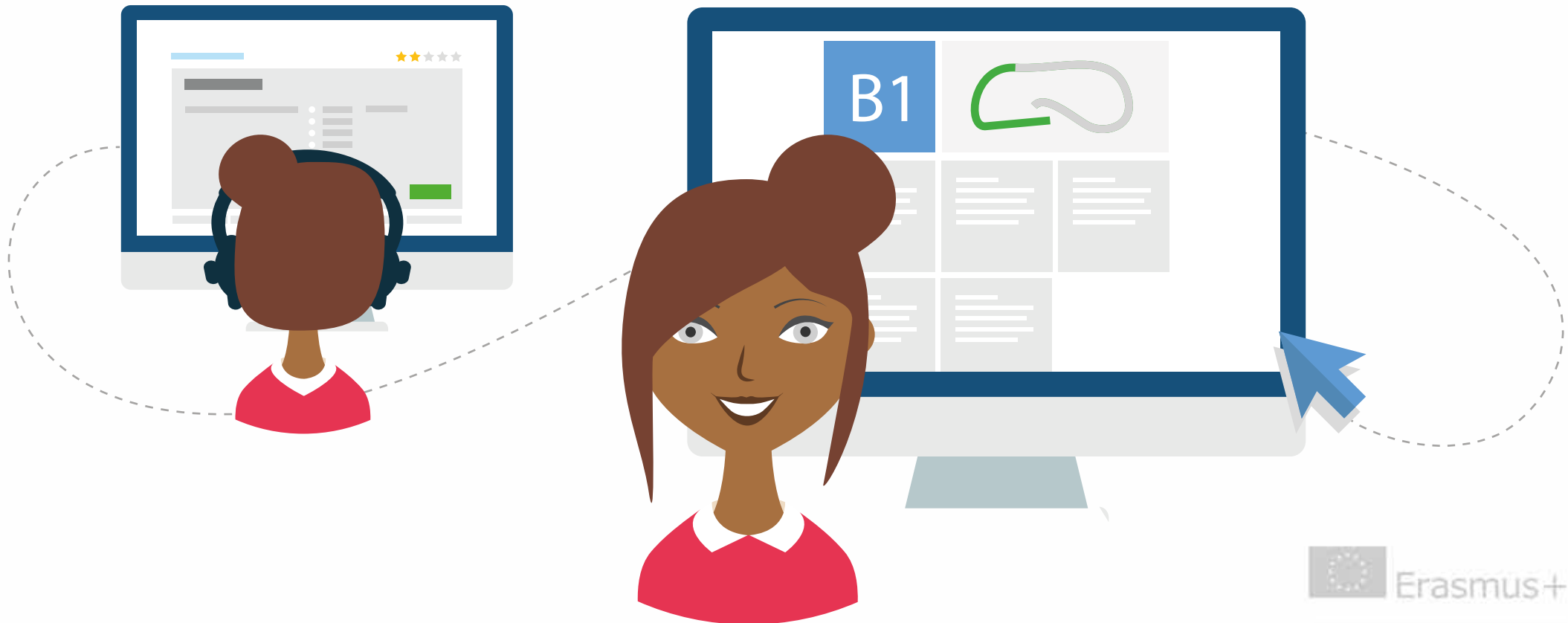


is **progressive** and **adapts**
to your language level

See your results instantly

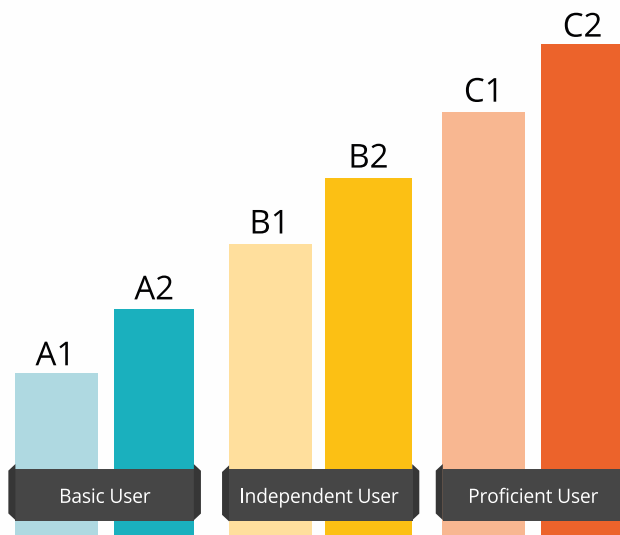


Immediate results



Find out your level for each of these skills!

➤ Determine your level in each of these skills, according to the **CEFR***



The assessment consists of

- ✔ **Grammar**
(20 questions)
- ✔ **Vocabulary**
(15 questions)
- ✔ **Key communicative phrases**
(15 questions)
- ✔ **Listening comprehension**
(10 questions)
- ✔ **Reading comprehension**
(10 questions)

What are the advantages for you?



A **detailed analysis of your language level**,
in line with the CEFR



Your **evaluation record** as proof
of your language skills



Take this opportunity to **create** or **update** your

- **Language Passport**
- **Europass**
- **Youthpass**



The opportunity to take an **OLS language course** and have access to forum,
tutoring sessions and MOOCs to reach the recommended level.

What happens next?



Your results will not prevent you from taking part in the Erasmus+ mobility. You can improve your language level by taking an **OLS language course.**



The sooner, the better!



The OLS language assessment is **compulsory** for Erasmus+ mobility participants with German, English, Spanish, French, Italian or Dutch as their main language of instruction, work or volunteering, with the exception of native speakers.



If you are a higher education student, taking the OLS language assessment is a **prerequisite** to your mobility, except in duly justified cases.



Be careful not to miss the **deadline**!

Erasmus+ Online Linguistic Support

Make the most of this unique opportunity!

Enjoy your Erasmus+ experience abroad!



Online Linguistic Support